

NEWCREST ORANGE CHALLENGE

2023 RIDE GUIDE



NEWCREST
**ORANGE
CHALLENGE**

10.09.23



Winners



A man in red shorts stands on a large rock in a rocky stream, surrounded by dense forest. Sunlight filters through the trees, creating a serene atmosphere. The text 'FEEL LOST IN THE MOMENT' is overlaid on the image.

FEEL
LOST IN
THE
MOMENT

Welcome from the NSW Government

Welcome to the beautiful NSW Central West tablelands for the Newcrest Orange Challenge, proudly supported by the NSW Government's tourism and major events agency, Destination NSW.

Surrounded by breathtaking scenery, the Newcrest Orange Challenge is a classic cycling event that will see you taking on challenging hills through varying terrain, encapsulating everything this spectacular region and ride has to offer.

With stunning landscapes, incredible cycling routes, a welcoming community and a variety of off-bike attractions, Orange is an ideal location for major cycling events, which enhance the region's reputation as one of the nation's premier cycling destinations.

Events like the Newcrest Orange Challenge also make a vital social and economic contribution to the region, attracting thousands of competitors, supporters and officials who stay in our hotels and spend locally, supporting local businesses and jobs throughout the Central West visitor economy.

Best of luck to all participants, enjoy the ride and take some time to explore the beautiful vineyards, artisan shops, bustling markets and award-winning restaurants of one of Australia's finest food and wine regions.



Contents

Welcome from Bicycle Network	5
Registration day	9
Daily schedule.....	9
Event village.....	9
Social ride.....	10
Kids ride.....	10
Women’s Community.....	11
Rider Briefing.....	12
Jersey swap.....	12
Parking.....	12
Valet service 170km.....	12
Ride Day	13
88km ride.....	13
170km ride.....	14
Event village map.....	15
Event assistance	16
SAGS.....	16
On-road support	17
Route marshals.....	17
First Aid.....	17
Mechanical support.....	17
e-bikes.....	17
Nutrition and Hydration	18
Ride checklist	19
Merchandise	20
Volunteers	21
Event sponsors	24

Welcome to Country

Bicycle Network acknowledges the Traditional Owners of the Wiradjuri Country. We pay our respects to their Elders, past, present and emerging.

Welcome to Newcrest Orange Challenge

Bicycle Network has been bringing the community together with incredible events around the country for decades, and I've been lucky enough to be involved in many as a rider, an ambassador, a volunteer and more recently as the organisation's CEO.

This new perspective has left me with one big take away, and that is just how dedicated our team is to keep raising the bar and keep reimagining what a world-class bike riding event looks like. Even after all these years.

Helping our cause at the Newcrest Orange Challenge is the truly special community at the centre of it all. The township has played an accommodating host in four editions we've run together so far, and we're overjoyed to return and make 2023 the best one yet.

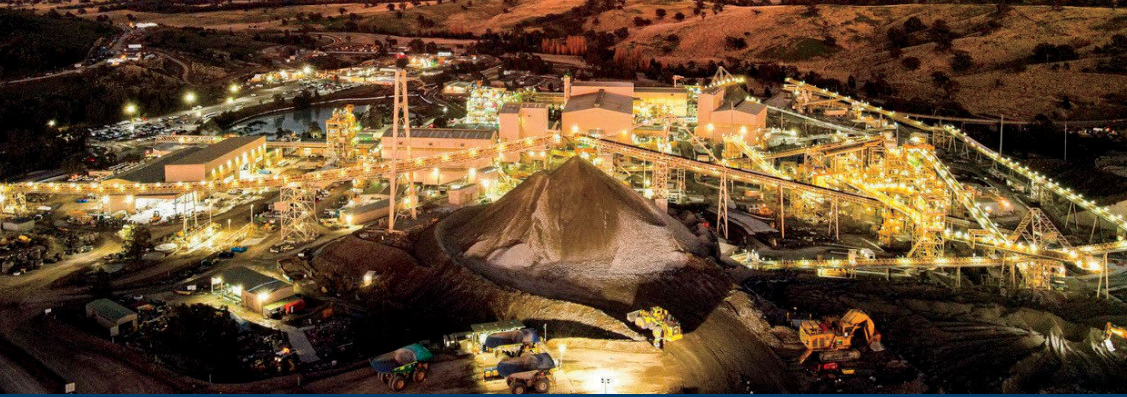
Drought, bushfires and the pandemic posed serious challenges for the community in recent years, and its willingness to embrace us all for a weekend of bike riding fun shows the size of its heart.

I'm sure all participants will show their appreciation and enjoy this breathtaking ride, enriched by that spirit. Each exhilarating descent might be followed by a gruelling climb or even a puncture - but by putting one pedal in front of the other there'll be good times at the end of it all. Just please don't forget to enjoy the views!

See you on the road.

Alison McCormack





NEWCREST MINING'S CADIA VALLEY OPERATIONS



ABOUT US

Cadia is one of Australia's largest gold mining operations, owned by Newcrest Mining.

We are located approximately 25 kilometres from Orange in Central West New South Wales and 250 kilometres west of Sydney.

Our site comprises two mines - the Cadia East underground mine, which is one of the largest gold and copper deposits in the world, and the Ridgeway underground mine (currently in care and maintenance).

Cadia East commenced commercial production in January 2013 and uses the large-scale mining method known as panel caving.



CELEBRATING 25 YEARS

SAVE
THE
DATE



SUNDAY, 22 OCTOBER
2023

CELEBRATING 25 YEARS
OF MINING IN THE CADIA
DISTRICT



SUPPORTING OUR COMMUNITY

Cadia prides itself on its expansive community support programs.

Each year, we provide in-kind and financial support to community groups and organisations in the Blayney, Cabonne and Orange Local Government Areas.

Cadia is proud to sponsor the Newcrest Orange Challenge through Cadia's Community Partnership Program (CPP).

The CPP aims to support and enhance community groups, organisations and infrastructure which provide a sustainable foundation for the communities in which we operate.

Leading Australia in renewables

Iberdrola Australia is a long-term developer, owner and operator of Australian renewable generation assets and has more than 15 years of experience in the Australian market.



Bicycle Network members

Bicycle Network members are invited to join us for an exclusive Q&A session with our CEO, Alison McCormack.

Bicycle Network Q&A session:

4pm on Saturday.

Meet at Hotel Canobolas.

Not a member?

Make sure you don't miss out – join now from just \$11.99/month at bicyclenetwork.com.au/membership

Come roll with us

We've got your back with:



Personal injury coverage



Up to \$5 million liability cover



Access to legal support



Advocacy initiatives



10% off Bicycle Network events



Exclusive partner discounts



from just
\$11.99
a month.



BICYCLE NETWORK

We've got your back

Registration Day

Saturday 9 September

Daily schedule

Time	Activity	Location
12:00pm – 5:00pm	Pack collection and valet drop off open	Roberston Park
12:00pm – 2:30pm	Social Ride 40km	Roberston Park (Lords Pl side)
1:30pm – 2:30pm	Social Ride 12km	Roberston Park (Lords Pl side)
3:00pm – 3:45pm	Women's Community session	Hotel Canobolas (Summer St)
3:00pm – 4:00pm	Kids Ride	Robertson Park (McNamara St)
4:00pm – 4:45pm	Member's Q&A with Alison McCormack	Hotel Canobolas (Summer St)
5:00pm – 5:30pm	Rider Briefing	Roberston Park

Event village:

Robertson Park, Summer Street
Orange, Wiradjuri Country

Join us at the event village in the heart of Orange from 12:00pm to 5:00pm for:

- Rider pack collection
- Jersey size swap (limited sizes available)
- Valet drop-off
- Official merchandise

While you're at the village you can enjoy local food and drink offerings, free kids activities and live music!

Social Ride

Warm up your legs on our social pedal, leaving Robertson Park. Choose either a 12km loop to the outskirts of town or a 40km loop ride to Mount Canobolas (return). The ride is supported by Bicycle Network volunteer ride leaders but is on open roads and under normal traffic conditions. [The social rides are free, but it is essential that you register.](#)



40km ride

Elevation: 939m
Start: 12:00pm
Meet-up spot:
Robertson Park
(Lords Pl side)

VIEW ROUTE



Ride Leaders:
Crossy and Kirsty

12km ride

Elevation: 109m
Start : 1:30pm
Meet-up spot:
Robertson Park
(Lords Pl side)

VIEW ROUTE



Ride Leaders:
Ali and Marion

Kids Ride

There is no better feeling than crossing the finish line with crowds cheering, music pumping and knowing you have had a great time out on your bike. Now your kids can experience that feeling too!

Bring the family down to Robertson Park on Saturday and kids 12 and under are invited to join the Newcrest Orange Challenge Kids Ride.

The ride will take place on the closed McNamara St and will consist of laps around an outlined course. All bikes are welcome and all riders will receive a small participation gift!

Entry is a gold coin donation to our [Mind Body Pedal](#) program.

Women's Community

In Australia, only one in three bike riders are women or gender diverse and here at Bicycle Network our goal is to bridge this gap of gender imbalance. Our Women's Community helps encourage, empower and inspire more women and gender diverse people to ride bikes and support a healthy and happy lifestyle.

And we're proud to share that of all Bicycle Network events, Newcrest Orange has one of the highest female participation rates!

Saturday schedule

*Social Ride
at 1:30pm*

*Women's
Community Session
at 3:00pm*

Rider briefing

A rider briefing will be held at 5:00pm on Saturday 9 September at the rotunda in Robertson Park.

We ask that you attend the briefing to hear final event information, details about the ins and outs of the starting process and important information about the route.

Jersey swap

Not quite the right fit? A jersey swap service will be available at the Robertson Park event village on Saturday 9 September, subject to size availability. Returned jerseys must be unworn, tags attached and in original packaging.

Parking

Bike parking will be available inside the event village at Robertson Park.

Limited car parking will be available behind the Orange City Council building, accessed via Lords Place. Otherwise, street parking is available.

Valet service - 170km only

Our rider valet service makes it easy for you to look after yourself on your ride, but it's important to plan-ahead and use your valet bags wisely.

An A3-sized valet bag will 'ride ahead' of you and be waiting for you at Mandurama.

In this bag you can pack any essentials like food and fresh kit that you may want to collect at the lunch stop. You'll also receive a second bag to go inside the first bag. The second bag is your return valet service, so you can pack any unwanted clothing or items to send to the finish site.

Please drop your valet bags off at the Bicycle Network Marquee at Robertson Park by 5:00pm on the Saturday. There will be no valet drop at the start line on the Sunday morning.

Ride Day Sunday 10 September

88km ride

Key details

Distance: 88km

Elevation: 1,342m

Departing: 7:00am, Robertson Park, Orange

Estimated ride time: 2.5 – 6.5 hours

Cut-off times

Iberdrola Cargo	50km	10:45am
-----------------	------	---------

Orange – Finish	88km	1:45pm
-----------------	------	--------

To meet the advertised cut-off times, riders must aim for a minimum average speed of 14km/h (excluding breaks).



170km ride

Key details

Distance: 170km

Elevation: 2,200m

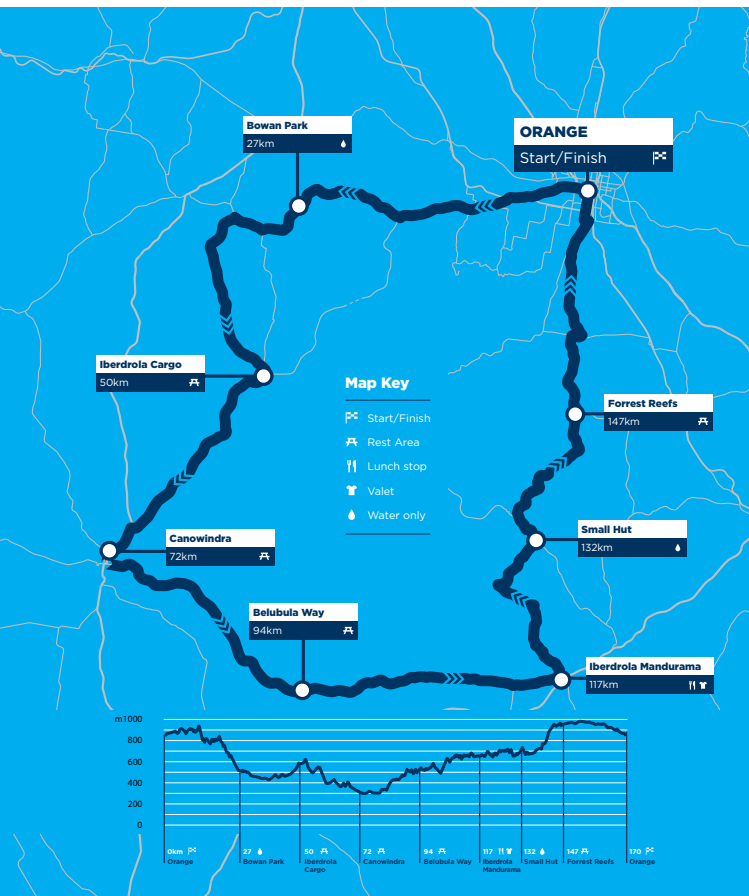
Departing: 7:00am, Robertson Park, Orange

Estimated ride time: 4.5 - 8 hours

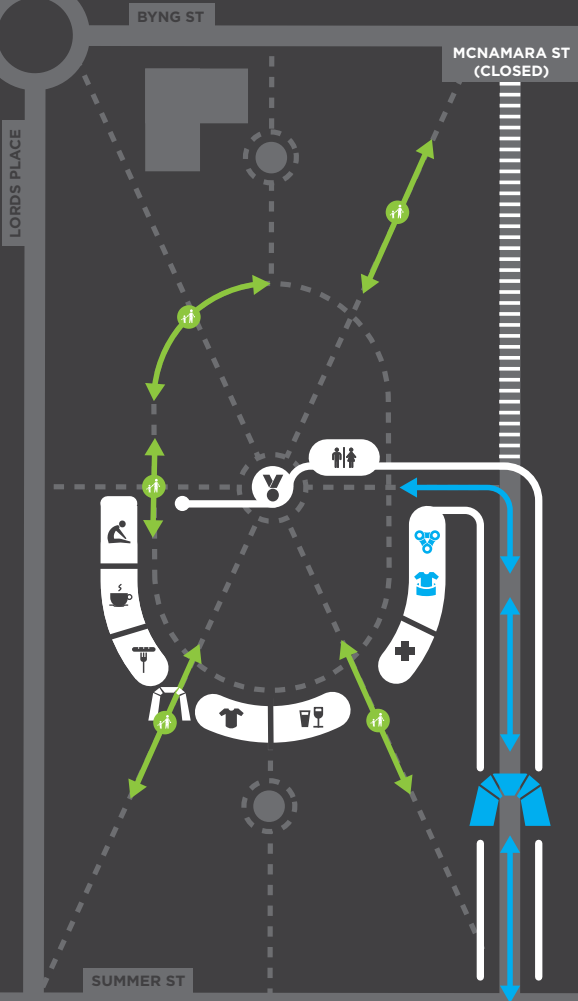
Cut-off times

Iberdrola Cargo	50km	9:30am
Canowindra	72km	10:30am
Belubula Way	94km	11:30am
Iberdrola Mandurama	117km	12:30pm
Forest Reefs	147km	2:00pm
Orange - Finish	170km	3:00pm

To meet the advertised cut-off times, riders must aim for a minimum average speed of 22km/h (excluding breaks).



Robertson Park Event Village



- | | | | |
|--------------------|------------------|----------------------------|------------------|
| HOTEL
CANOBOLAS | | | |
| | RECOVERY
ZONE | COFFEE | BBQ |
| | | | |
| | HUB
MERCH | BAR | FIRST
AID |
| | | | |
| STAGE | TOILETS | PACK
PICK UP | VALET |
| | | | |
| | | RIDER
START &
FINISH | PUBLIC
ACCESS |

Event assistance

We've got your back out on the road!

If you need a hand, spot a hazard or have a query on the ride day, please contact our event assistance team on the numbers below.

IS IT AN EMERGENCY?

Does it require Ambulance, Fire or Police?

NO

CALL EVENT ASSISTANCE

0425 381 816 or
0425 777 484

YES

STEP 1:

Call **EMERGENCY SERVICES**
000

STEP 2:

Call **EVENT ASSISTANCE**

0425 381 816 or
0425 777 484

In case of an emergency, it is always recommended to call **000** first.

Calling event assistance **after** calling 000 is essential so that, where possible, Bicycle Network can work with the Emergency Services to facilitate the appropriate response.

SAGs

Can't make it to the finish line? We get it - sometimes the day just doesn't go your way. But don't fear, we'll still get you home.

Pull over in an appropriate location, tip your bike upside down and our friendly SAG (support and gear) team will pick you up as they come through.

On-road support

Route marshals

There will be more than 150 route marshals along the route who can provide directions, encouragement and assistance. Give them a wave, listen to their instructions and let them know if you need a hand.

First aid

First aid will be available at all major rest areas:

- Robertson Park, Orange (Start and Finish)
- Iberdrola Cargo
- Canowindra
- Iberdrola Mandurama

If you need assistance while out on the road, please contact Event Assistance who will be able to respond appropriately.

Mechanical support

Mechanical support will be provided by local mechanics from DG Cycles and will be at the following locations:

- Robertson Park, Orange (Start)
- Iberdrola Cargo
- Canowindra
- Iberdrola Mandurama

Mechanics will provide their labour and assistance for free, however any spare parts (e.g. tubes) will be at a cost to the rider.

If you need mechanical assistance on Saturday, visit the DG Cycles Shop located across the road from the Event Village.

e-bikes

Participants are permitted to ride e-bikes in the 88km distance only. Participants must ensure that their battery is fully charged and the bike has the capacity to make it around the route (1342m elevation, and 88km). No additional support (e.g. charging) is provided for e-bikes.

Nutrition and Hydration

Rest stop	88KM	170KM
Bowan Park 27km Water Stop	Water & electrolytes	Water & electrolytes
Iberdrola Cargo 50km Rest Stop	Assorted slices, fruit, Winners Bars & Winners Gels	Assorted slices, fruit, Winners Bars & Winners Gels
Glenwood Forest 70km Water Stop	Water & electrolytes	
Canowindra 72km Rest Stop		Snacks & Winners Bars
Belubula Way 94km Rest Stop		Snacks & Winners Chews
Iberdrola Mandurama 117km Lunch Stop		Chicken or veg wrap & Winners Bars
Small Hut 132km Water Stop		Water & electrolytes
Forest Reefs 147km Rest Stop		Chips & Coke
Orange 170km Finish	Chicken or veg wrap	BBQ

Ride checklist

Use this checklist to make sure you have all the essentials for the best ride possible and to complete the Newcrest Orange Challenge.

Essential Items:

- Fully charged front white light and red rear light
- Two full water bottles
- Wrist band
- Gloves
- Additional food supplies
- Puncture repair kit
- Spare tubes
- CO2 canisters or pump
- Waterproof rain jacket
- Sunscreen
- Sunglasses
- Money/eftpos/credit card

Merchandise

Complete your kit!

Thanks to our Official Apparel Supplier, Hub Cycling.

Merchandise is available to purchase online or in the event village at Robertson Park.



Gilet
\$90.00



Bib Knicks
\$140.00



Lycra Sleeves
\$25.00



Cycling Cap
\$25.00



Cycling Socks
\$25.00

Volunteers

The success of the Newcrest Orange Challenge relies on the dedication of more than 200 volunteers, many of whom join us from the following local community groups:

- Rotary Club of Orange Daybreak
- Rotary Club of Blayney
- Country Women's Association - Canowindra
- Cargo Public School P&C
- Spring Terrace Public School P&C
- James Sheahan Catholic High School
- Canowindra Squash Club
- Orange RFS

If you are interested in getting involved, please contact us at volunteer@bicyclenetwork.com.au

10% Discount
CODE: ORANGE



Winners

winnersbars.com.au

Bike insurance by bike people

Get a
quote
today



BIKE INSURE

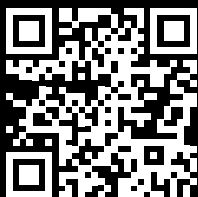
You should carefully read the relevant combined Product Disclosure Statement and Financial Services Guide (PDS) to ensure the product is right for you. A copy of each PDS is available on this website or by contacting us. The product issuer for bicycle insurance products is The Hollard Insurance Company Pty Ltd ABN 78 090 584 473, AFSL 241436 (Hollard). Bike Insure insurance is administered by Velosure Pty Ltd ABN 81 151 706 697 trading as BIKEINSURE (AR 410026). Bike Insure Insurance is promoted by Bicycle Network Incorporated ARBN 054 009 871 (AR 1284571) and administered by Velosure. Bicycle Network and Velosure are both Hollard's authorised representatives.



PREPD

FUEL YOUR NEXT RIDE WITH PREPD

Aussie, Amber Pate, powers
her Tour de France
performance with PREPD.



Scan the QR code to visit our
website & learn more.

PREPDHYDRATION.COM.AU

Event sponsors

Bicycle Network would like to thank our valued event partners and sponsors.

An event by



Major partners



Strategic sponsor



Event partners



Winners



BICYCLE
NETWORK®